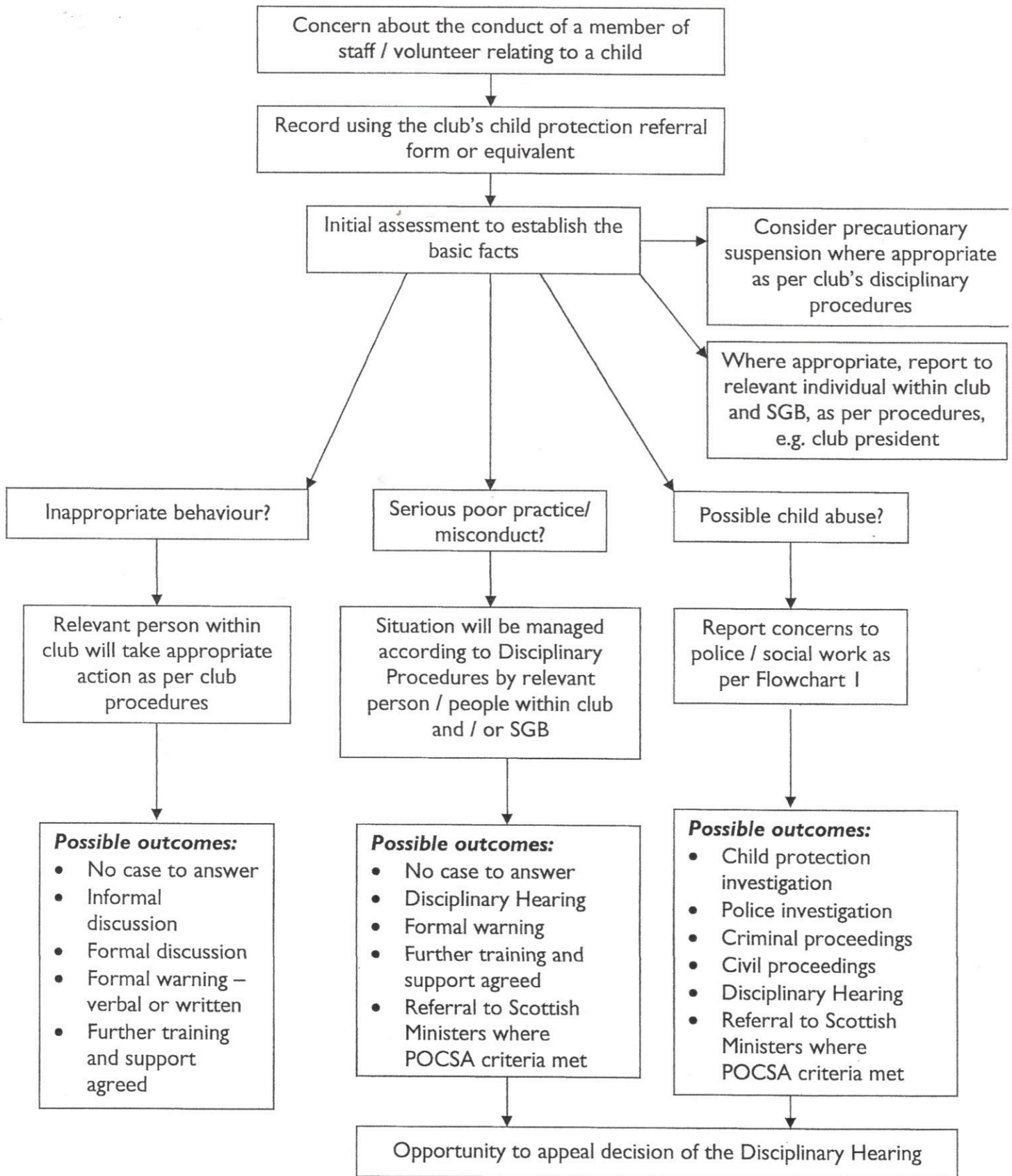
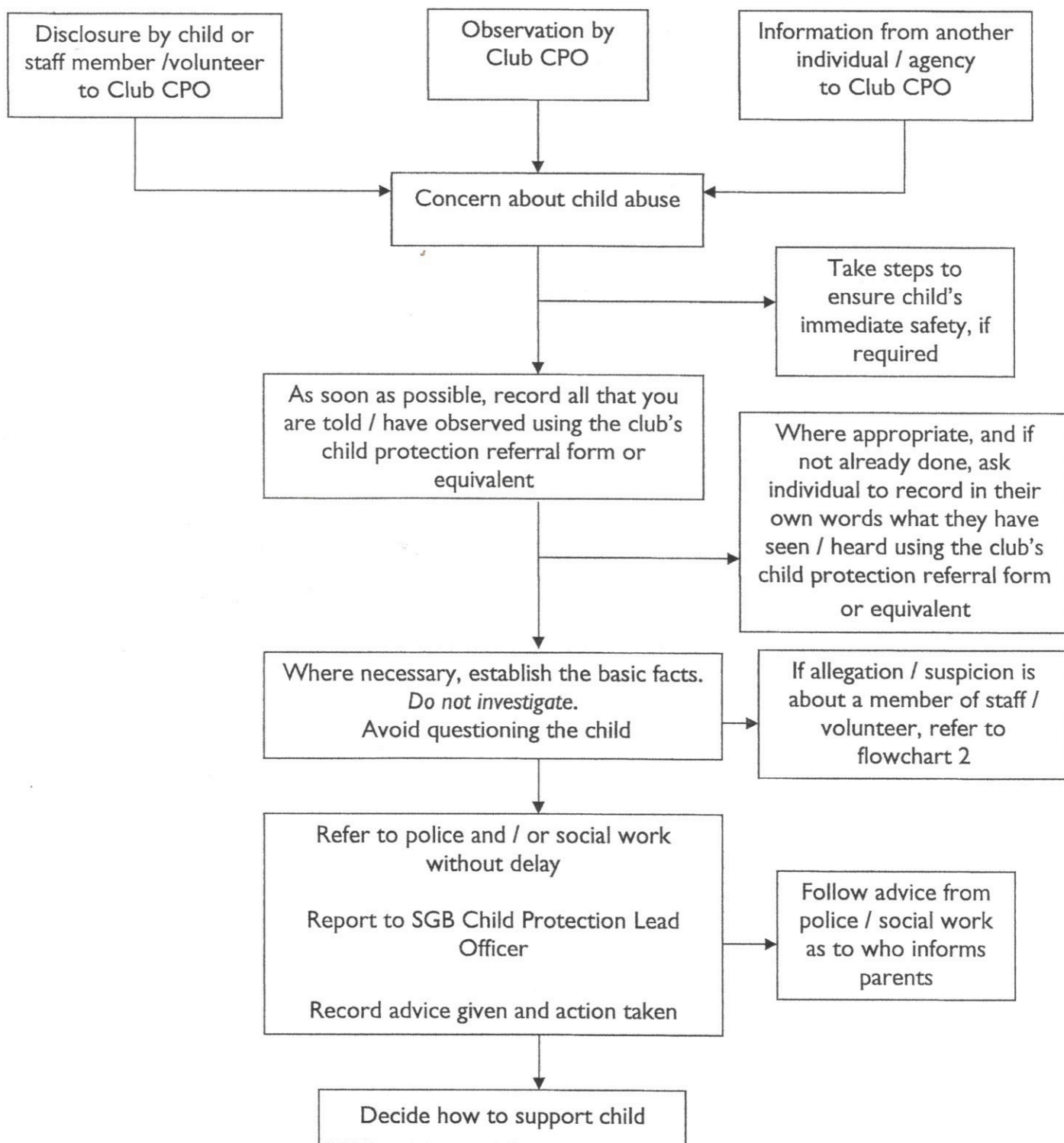


THE CLUB CPO'S ROLE IN RESPONDING TO CONCERNS ABOUT THE CONDUCT OF A MEMBER OF STAFF OR VOLUNTEER



IN SAFE HANDS CLUB CHILD PROTECTION OFFICER WORKSHOP H/O 9

THE CLUB CPO'S ROLE IN RESPONDING TO CONCERNS ABOUT A CHILD



IF AT ANY STAGE, YOU ARE UNSURE ABOUT THE APPROPRIATE COURSE OF ACTION, YOU SHOULD CONTACT SOCIAL WORK SERVICES AND/OR POLICE FOR ADVICE